

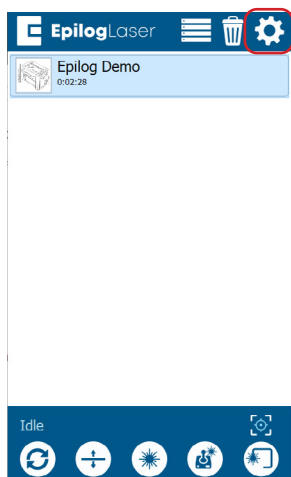
Wireless Connection Setup



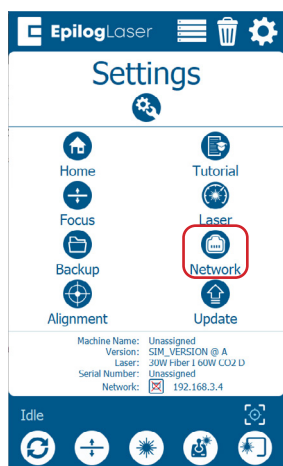
Fusion Pro - Fusion Edge - Fusion Maker
Laser System Models 16000 & 17000

Wireless Connection Setup

1. Click the **gear icon** located in the top right corner of the display.



2. Select **Network**.

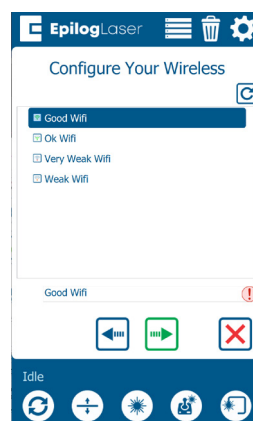


3. Select **Wireless**.

If you don't see that option, you may need to click the edit button in the bottom center of the screen.

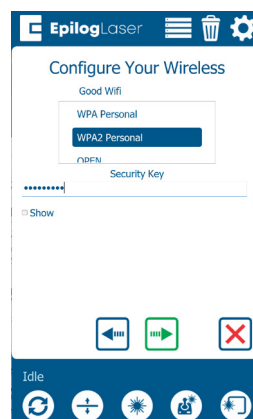


4. Select your wireless network.



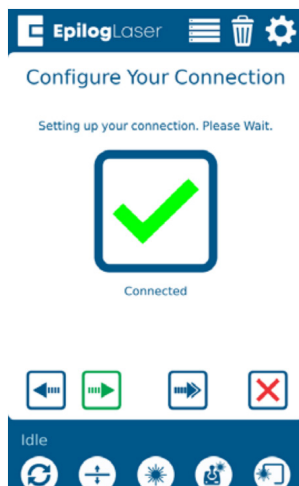
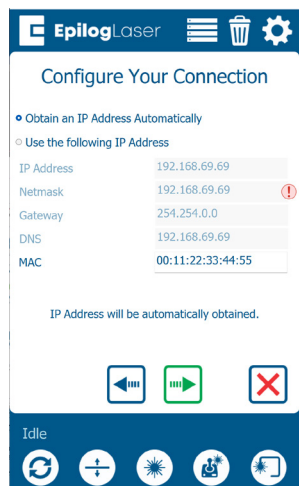
5. Click the **green arrow**.

6. Select the network security protocol of your network and enter the password. The most common type is WPA2 Personal.





7. Select **Obtain IP Address Automatically**.



8. Click the **green arrow** to complete setup.