

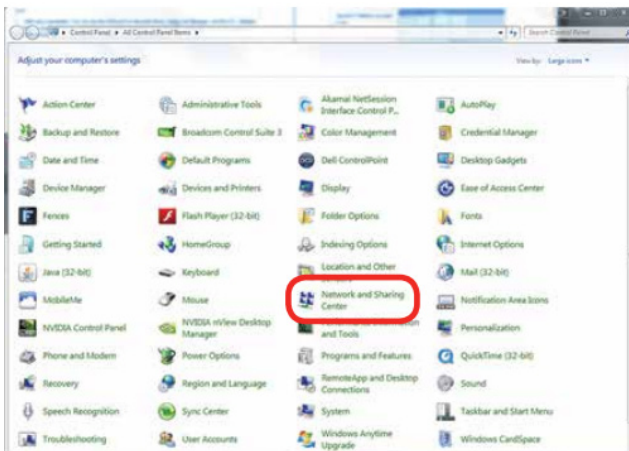


# Windows 10 TCP/IP Port Setup

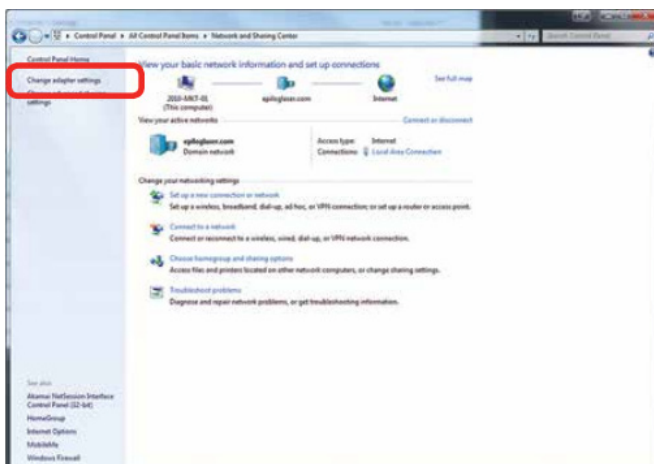
Setting up a direct connection through Ethernet requires a static TCP/IP address on your computer. The address of the TCP/IP Port is not the same as the IP address for the laser. This guide will show you how to configure the TCP/IP Port settings on a Windows 10 computer.

The laser should be on and connected with an Ethernet cable before beginning.

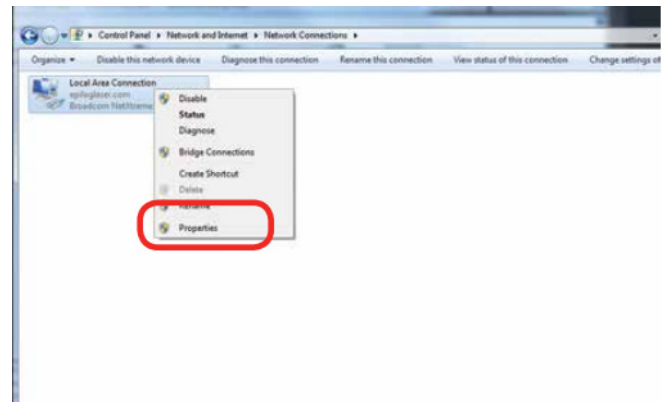
1. Go to the **Network and Sharing Center** in your computer's **Control Panel**.



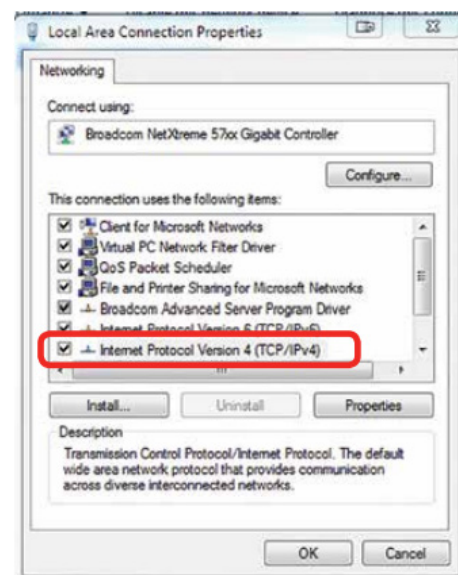
2. Click **Change Adapter Settings**.



3. Right click **Local Area Connection**, then click **Properties**.

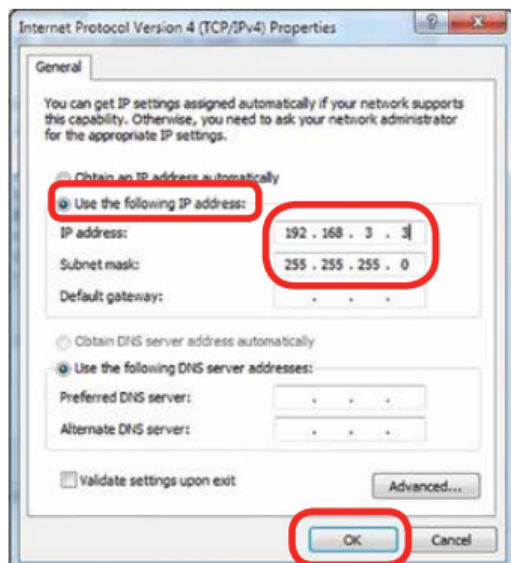


4. Select **Internet Protocol Version 4 (TCP/IP)**. Then click **Properties**.



5. Select **Use the following IP Address**. Type in the IP Address: 192.168.3.3.

6. Type in the Subnet Mask 255.255.255.0.



7. Click **OK** to complete setup.