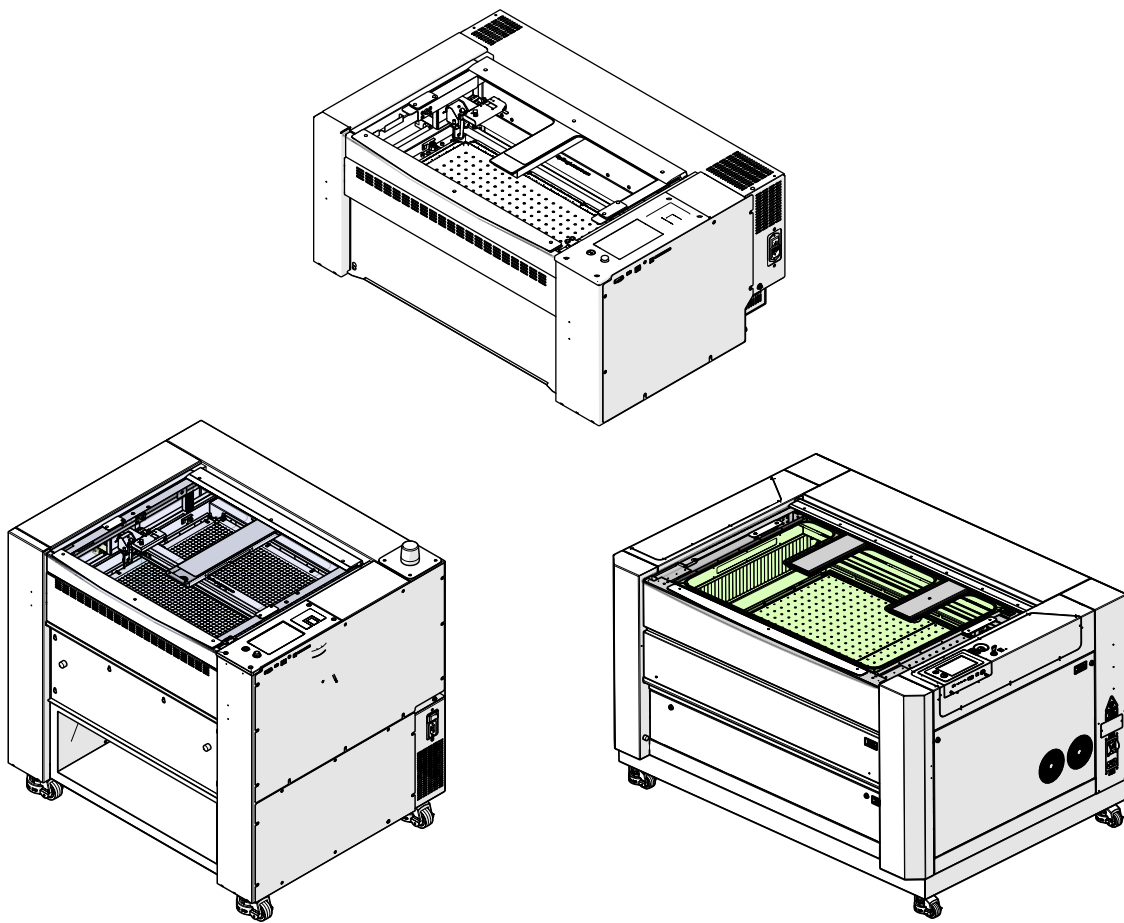


Updating the IRIS Camera System

Fusion Maker - Fusion Edge - Fusion Pro 24, 32, 36 & 48



Camera Update

The camera update refreshes the software that the IRIS system uses to operate. No internet connection is needed to run this procedure.

The camera update does not need to be completed regularly. Instead, the camera calibration should only be completed when any of the following behaviors are observed:

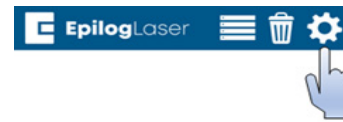
- Computer cannot connect to cameras after verifying network or USB connection.
- Camera feed appears completely black.
- Cameras cannot successfully calibrate.

Additionally, a camera update may be needed if any of the following components have been replaced:

- Overhead or carriage camera
- Camera USB cable
- Control board (in very rare cases)

Turn on the engraver, and let it complete the startup process.

1. On the display, press the gear icon to enter the Settings menu:

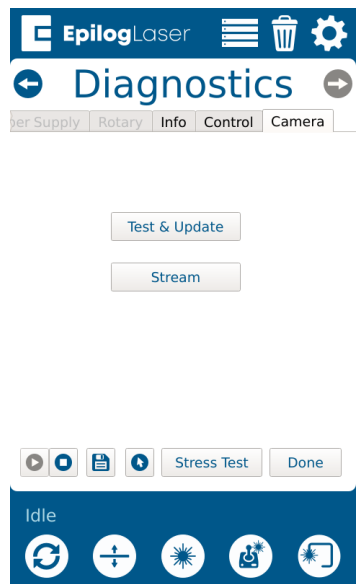


2. Press and hold the word "Settings" on the touchpad to gain access to the Advanced Settings menu:

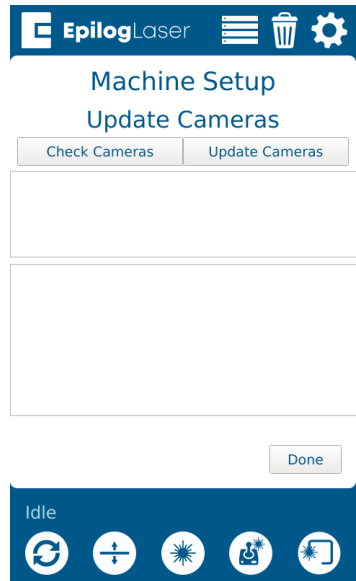


Updating IRIS Cameras

- 3. Enter the Diagnostics menu and scroll to the Camera tab. Press Test & Update:



- 4. Press Update:



- 5. Allow the engraver to complete the update. Once done, a success message will appear:

