

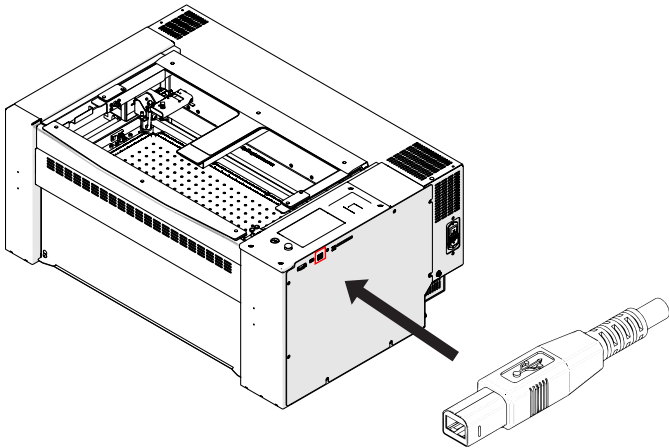
USB Connection Setup



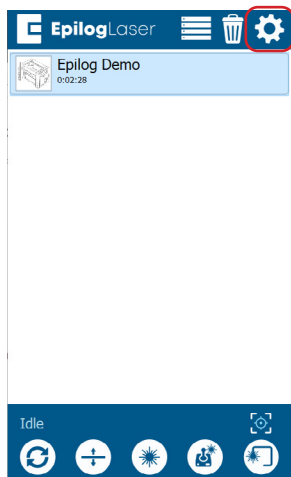
Fusion Pro - Fusion Edge - Fusion Maker
Laser System Models 16000 & 17000

USB Connection Setup

1. Power on the machine.
2. Connect the laser to your computer with a USB cable.



3. Click the **gear icon** in the top right corner of the display panel.

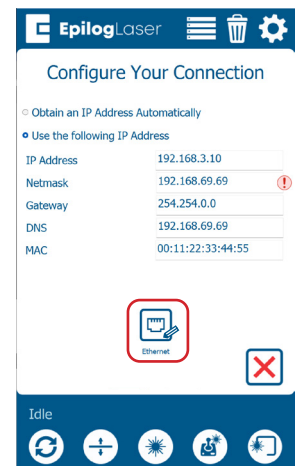
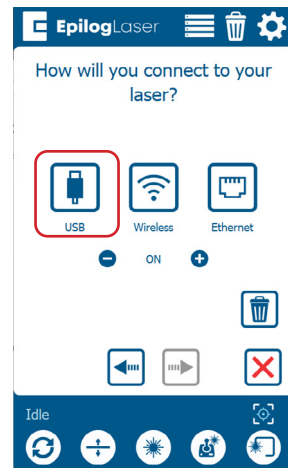


4. Select **Network**.



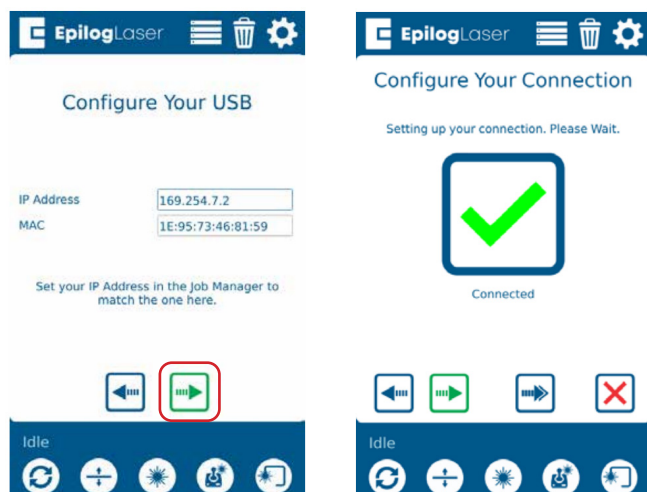
5. Select **USB**.

If you don't see that option, you may need to click the edit button in the bottom center of the screen.





6. The default IP address for a USB connection is 169.254.7.2.



7. Click the **green arrow** to complete setup.