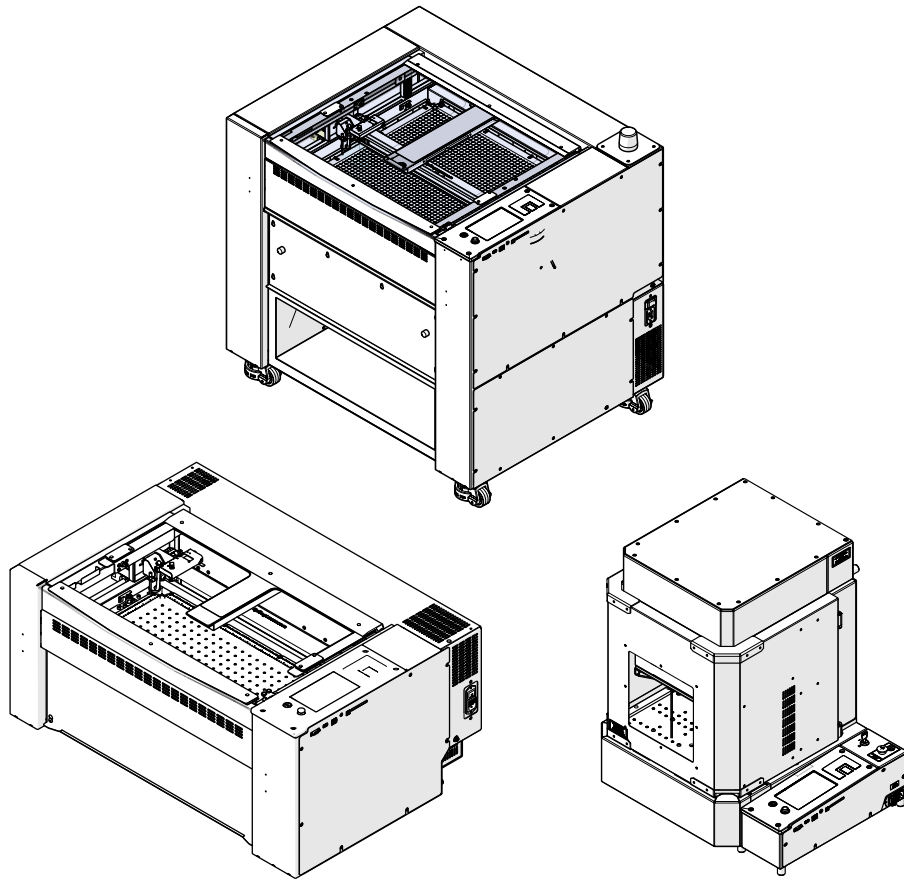


# Firmware Update Post 1.0.9.0



## Fusion Edge / Maker / Pro / Galvo Models 16000, 17000, 18000

### Required Tools / Parts

- Ethernet Cable
- USB Flash Drive
- Computer

# Overview

In firmware version 1.0.9.0, the update process has been streamlined. For systems operating on version 1.0.9.0 or newer, please refer to the guidelines provided in this document to complete the update. You may choose from two methods for updating the firmware: the network option, ideal for connections via Ethernet cable, or the USB option, which necessitates the use of a USB flash drive.

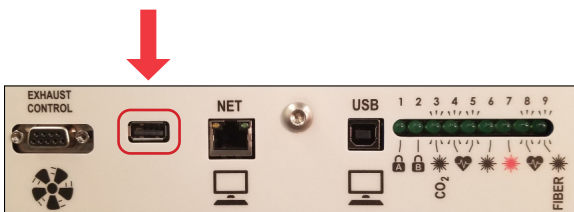
## Getting Started

Download the firmware from the link below.  
- [Support/Firmware](#)

## USB Update

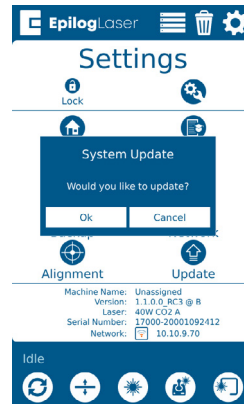
**! A blank USB flash drive is recommended. It must be formatted in FAT32, and no larger than 32 GB.**

1. Plug USB drive into computer.
2. If the firmware file extension is .zip, extract/unzip the file.
3. Drag SWU file to USB flash drive.
4. When file transfer is complete, eject USB flash drive.
5. Install USB flash drive into machine.



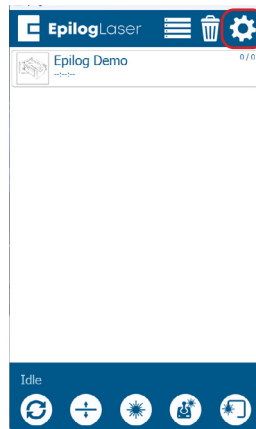
6. Power ON machine.

7. The machine will automatically detect the flash drive and prompt you to update.

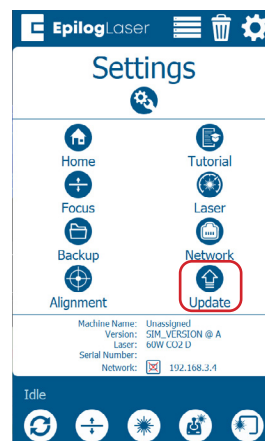


**If the flash drive is not automatically detected follow the steps below to manually update. Otherwise, skip to step 11.**

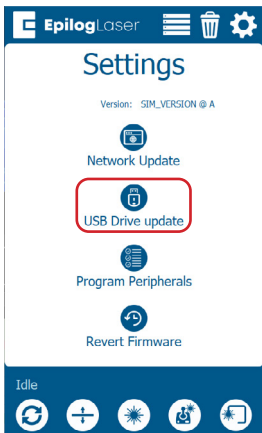
8. Click the Gear Icon



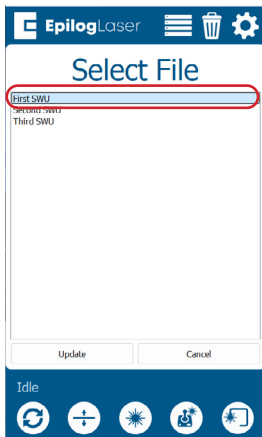
9. Select Update.



10. Select USB Drive Update.

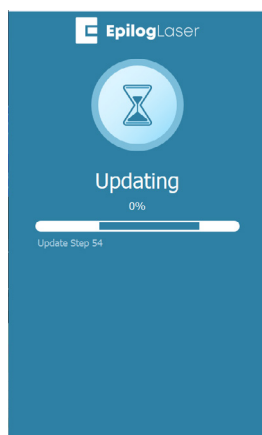
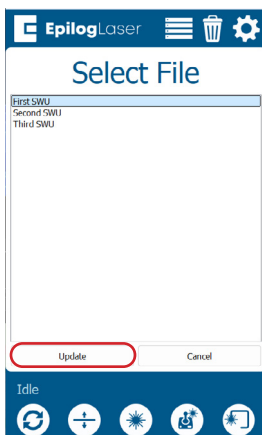


11. Select the SWU file.



If the SWU file doesn't appear, try removing and installing the drive, using a different flash drive, or reformatting the drive.

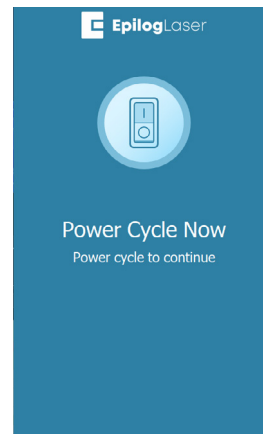
12. Select update.



13. Once the update is complete, Power Cycle the machine.



The screen may go dark during the update process. Do not power off the machine until you see the message below.



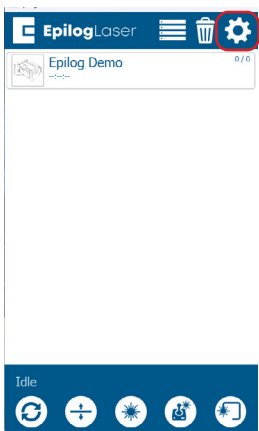
# Network Update



To update via network, the computer must have an established connection to the machine with an Ethernet cable. [Need Help?](#)

1. Power ON the machine.

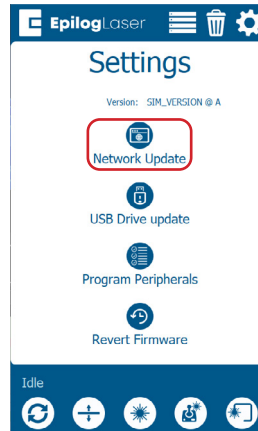
2. Click the gear icon.



3. Select Update.



4. Select Network Update.

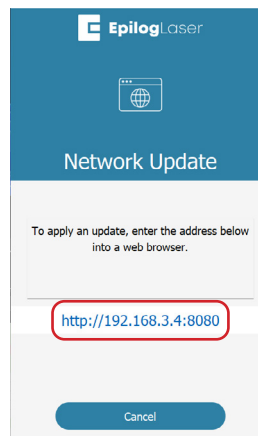


5. Open a web browser on your computer.

6. Enter the address exactly as it appears on the machine. **http://xxx.xxx.xxx.xxx:8080**



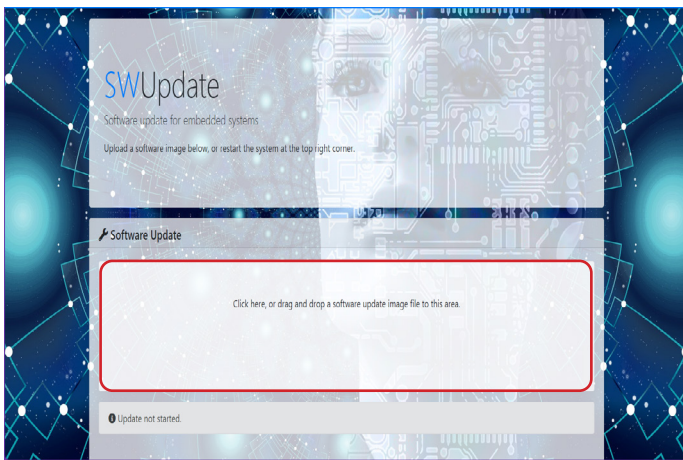
The address begins with **http://** followed by the IP address of the machine, and ends with **:8080**



7. If the firmware file extension is .zip, extract/unzip the file.

- [Support/Firmware](#)

8. Drag the SWU file into the web browser window shown below.



9. Once the update is complete, Power Cycle the machine.



The display may go dark during the update process. Do not power off the machine until you see the message below.

