

# Ethernet Connection Setup



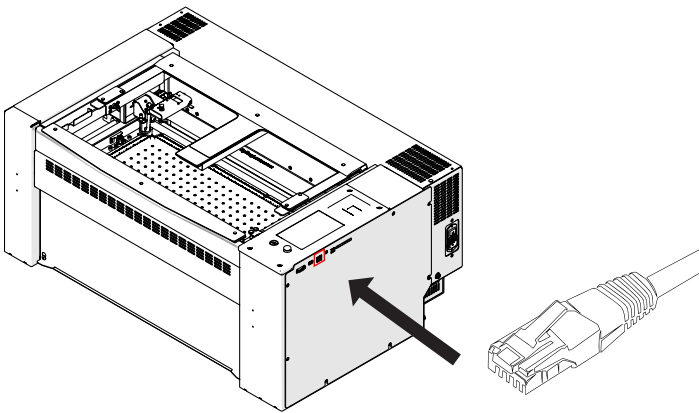
Fusion Pro - Fusion Edge - Fusion Maker  
Laser System Models 16000 & 17000

## Ethernet Connection Setup

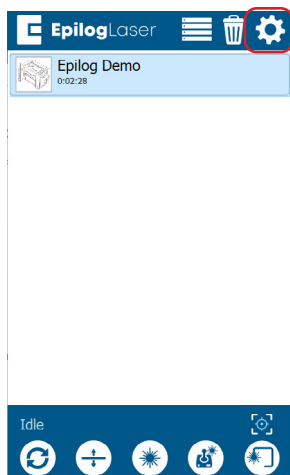
There are two types of Ethernet connections. Direct connection, where the laser is connected directly to the computer, and Network connection, where the laser is connected to the network.

### Direct Connection:

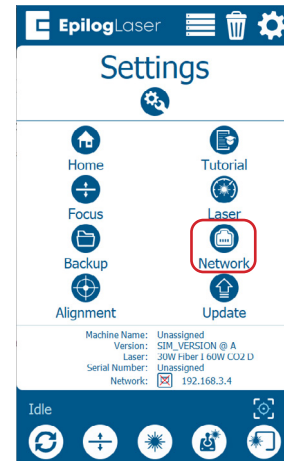
1. Power the machine on.
2. Connect the laser to the computer with an Ethernet cable.



3. Click the **gear icon** in the top right corner of the display panel.



4. Select **Network**.



5. Select **Ethernet**.

If you don't see that option, you may need to click the edit button at bottom center of the screen.



6. Select **Use the following IP Address**. In the IP Address field enter **192.168.3.10** This is the standard IP address for direct connection.



3. Click the **gear icon** in the top right corner of the display panel on the laser.



7. Configure your **TCP/IP Port** settings.

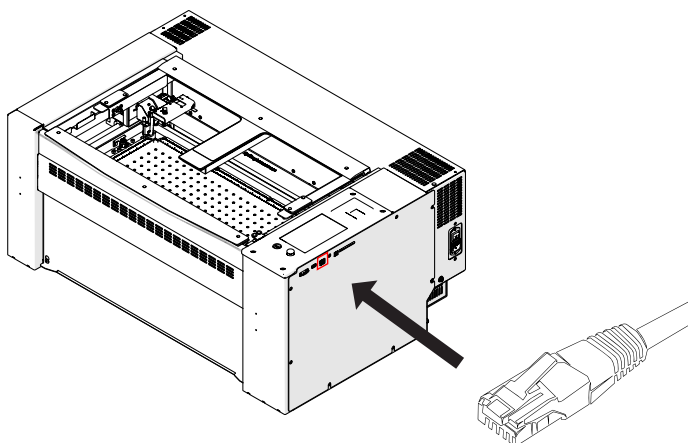
- TCP/IP Port setup is only needed for direct connection.
- If you haven't set up the TCP/IP port on the computer you will need to follow the instructions below.

[Windows 11 TCP/IP Port Setup.](#)

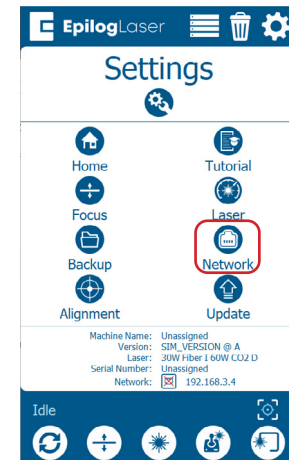
[Windows 10 TCP/IP Port Setup.](#)

## Network Connection:

1. Power the machine on.
2. Connect the laser to the network with an Ethernet cable.



4. Select **Network**.

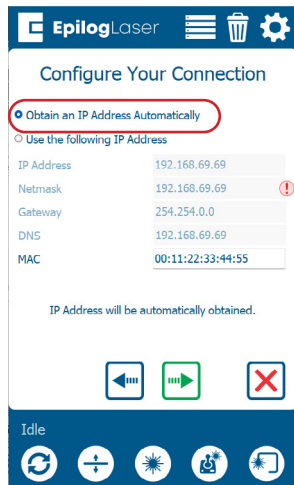


5. Select **Ethernet**.

If you don't see that option, you may need to click the edit button in the bottom center of the screen.



6. Select **Obtain IP Address Automatically**.



7. Click the **green arrow** to complete set up.