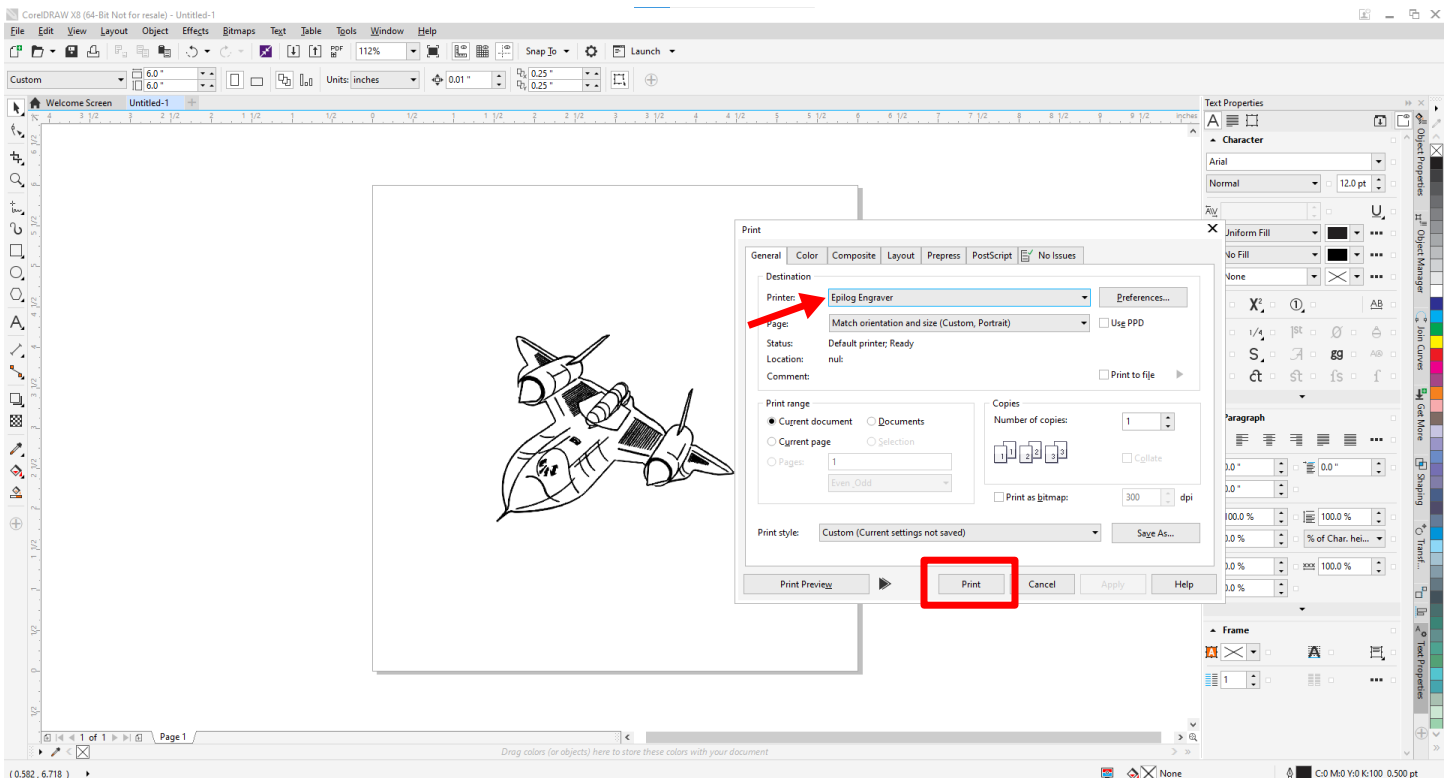


Changing Default Job Settings in the Epilog Software Suite

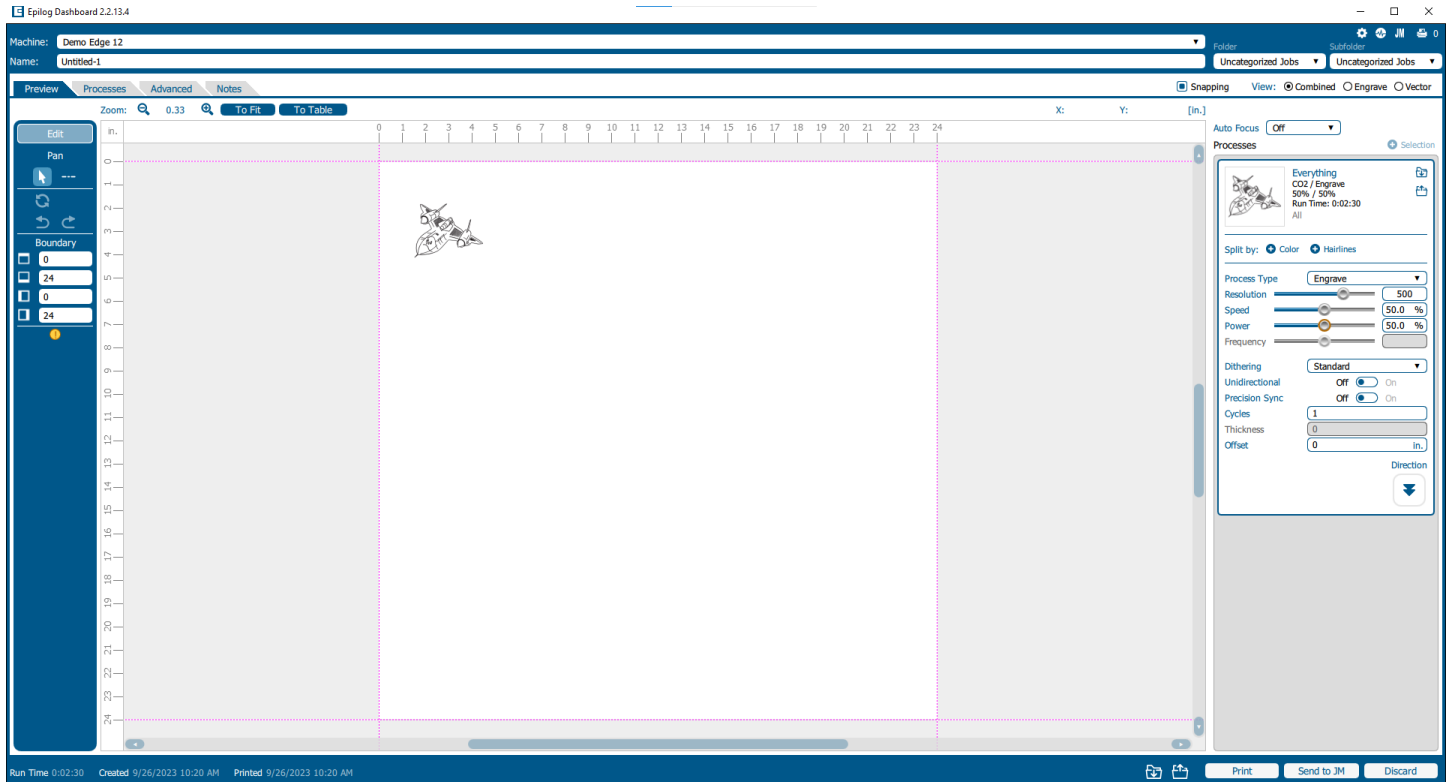
When a job is sent to the Epilog Software Suite, it is imported with default settings. These settings are then adjusted for a specific application or material. In some cases, a user may want to change the default settings to better fit their needs or to save time when setting up a job. The following instructions detail how to change the default job settings in the Epilog Software Suite.

1. Send a job to the Epilog Software Suite:

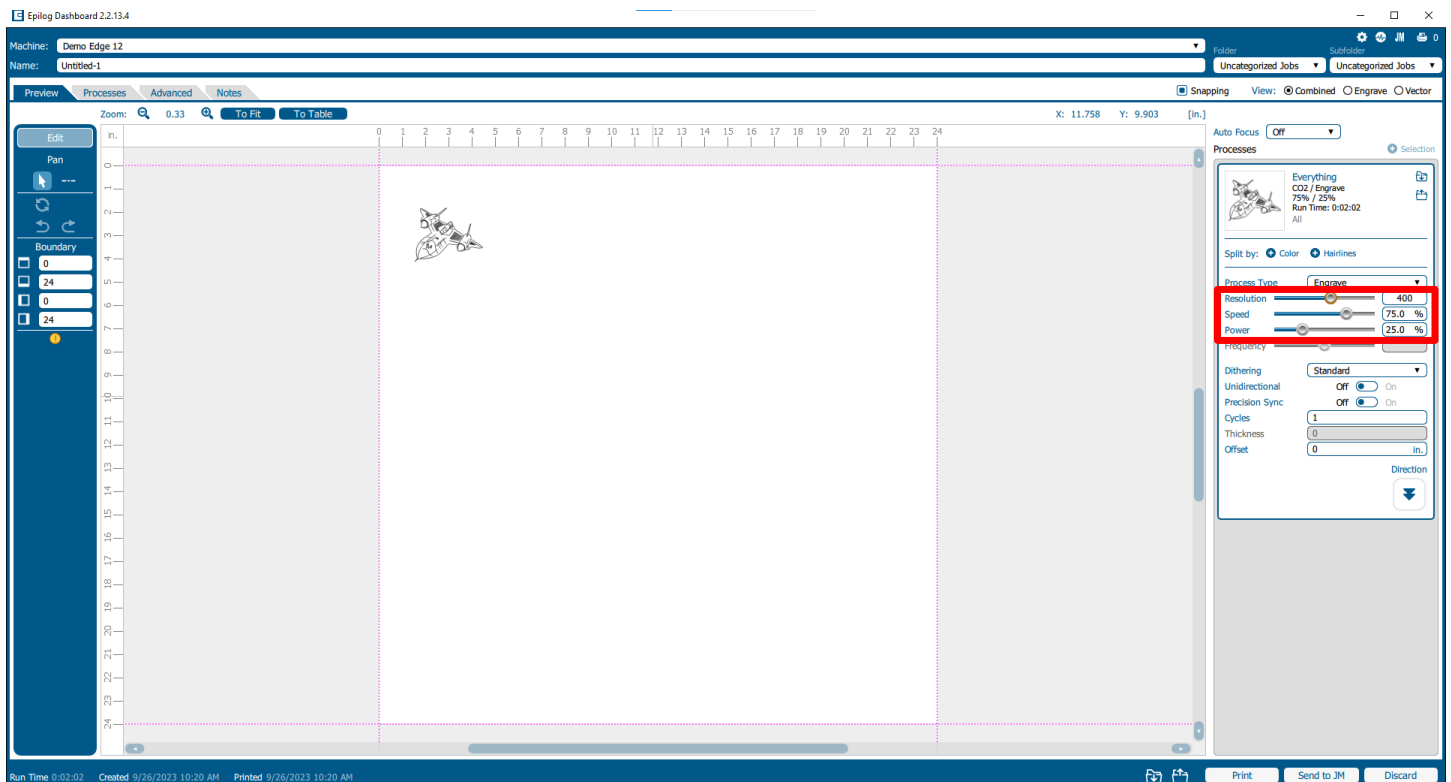


Software Suite Default Settings

2. Allow Job to load into Epilog Dashboard:

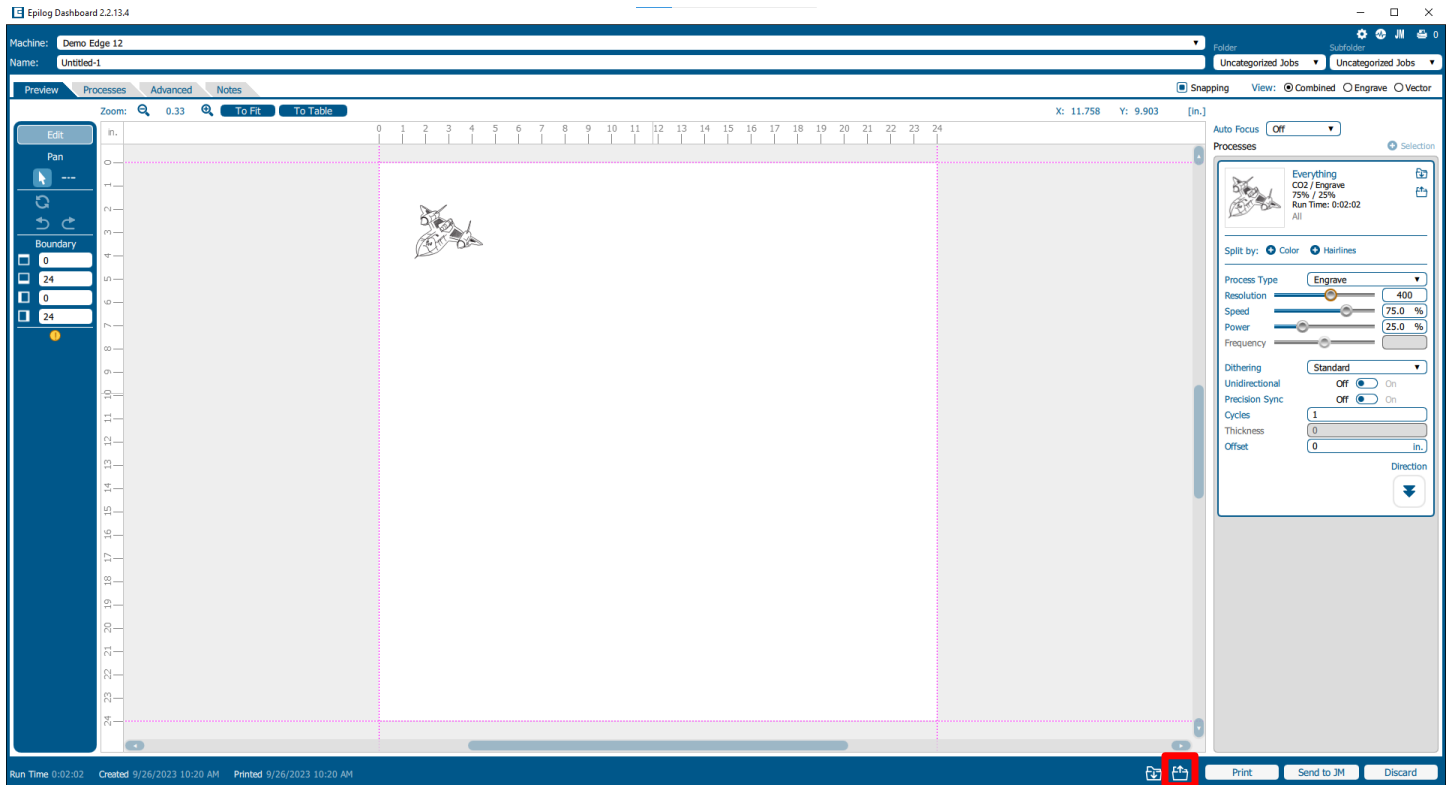


3. Adjust settings to desired values. In this example, speed, power, and resolution are being adjusted:

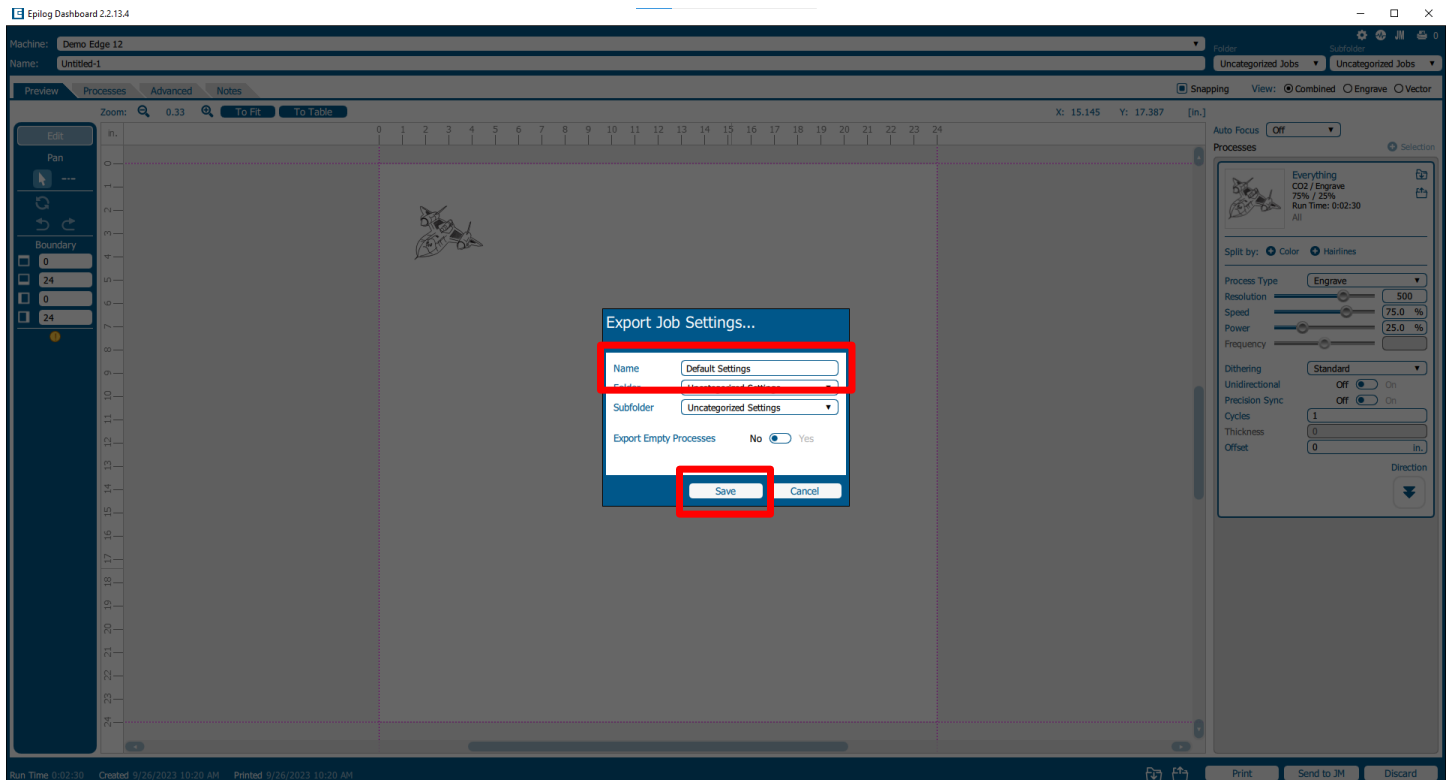


Software Suite Default Settings

4. Select Export Job Settings:

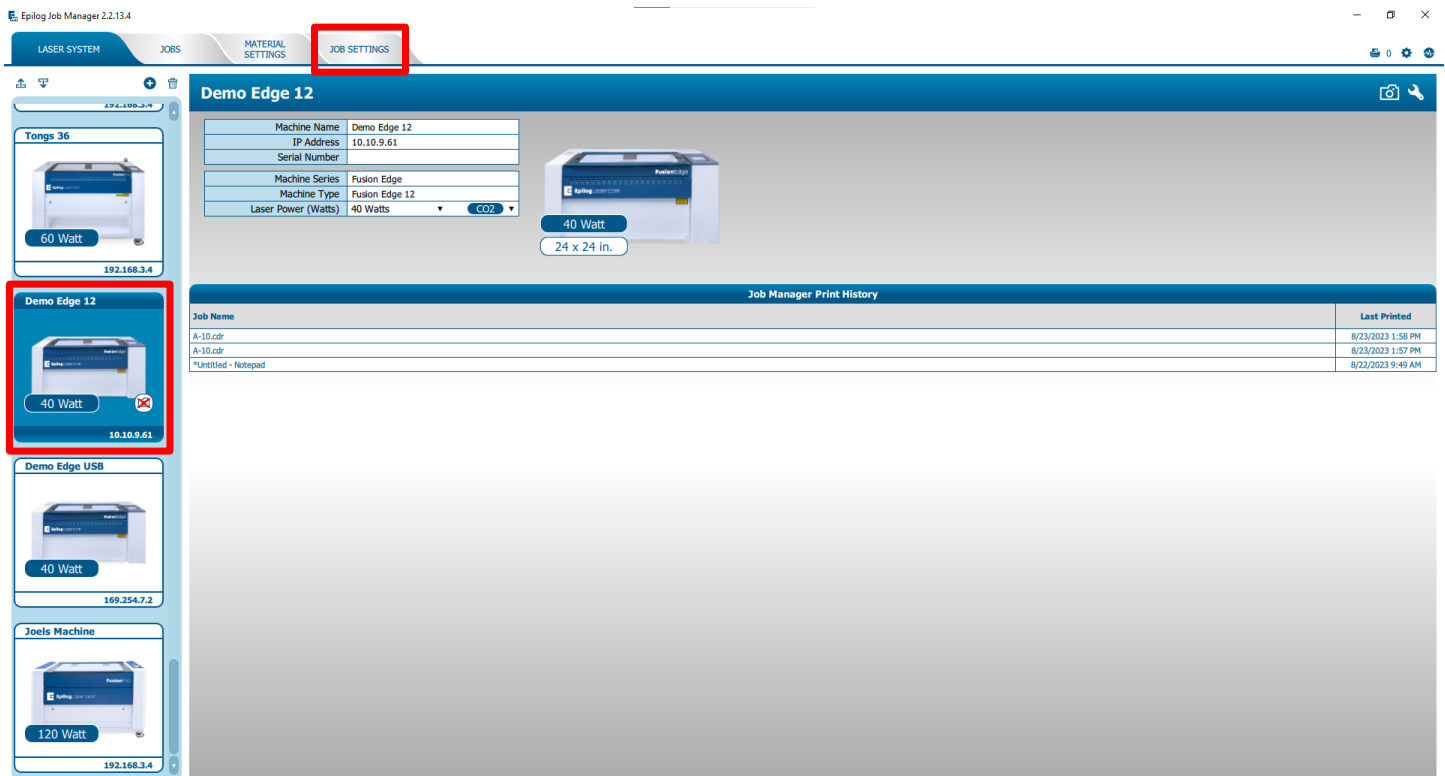


5. Name the settings, and click save:

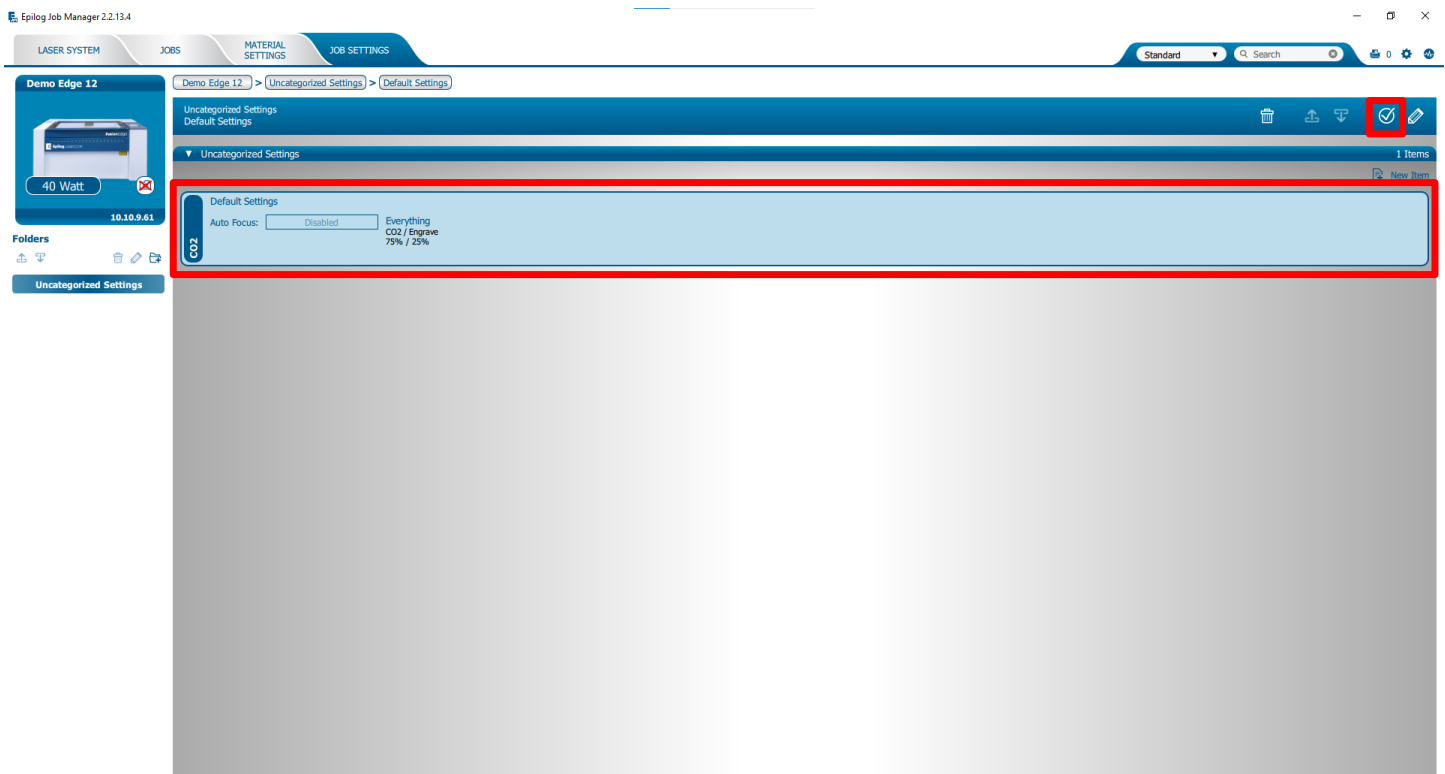


Software Suite Default Settings

6. Enter the Epilog Job Manager and select the engraver that the job settings were exported from, and select the Jobs tab:

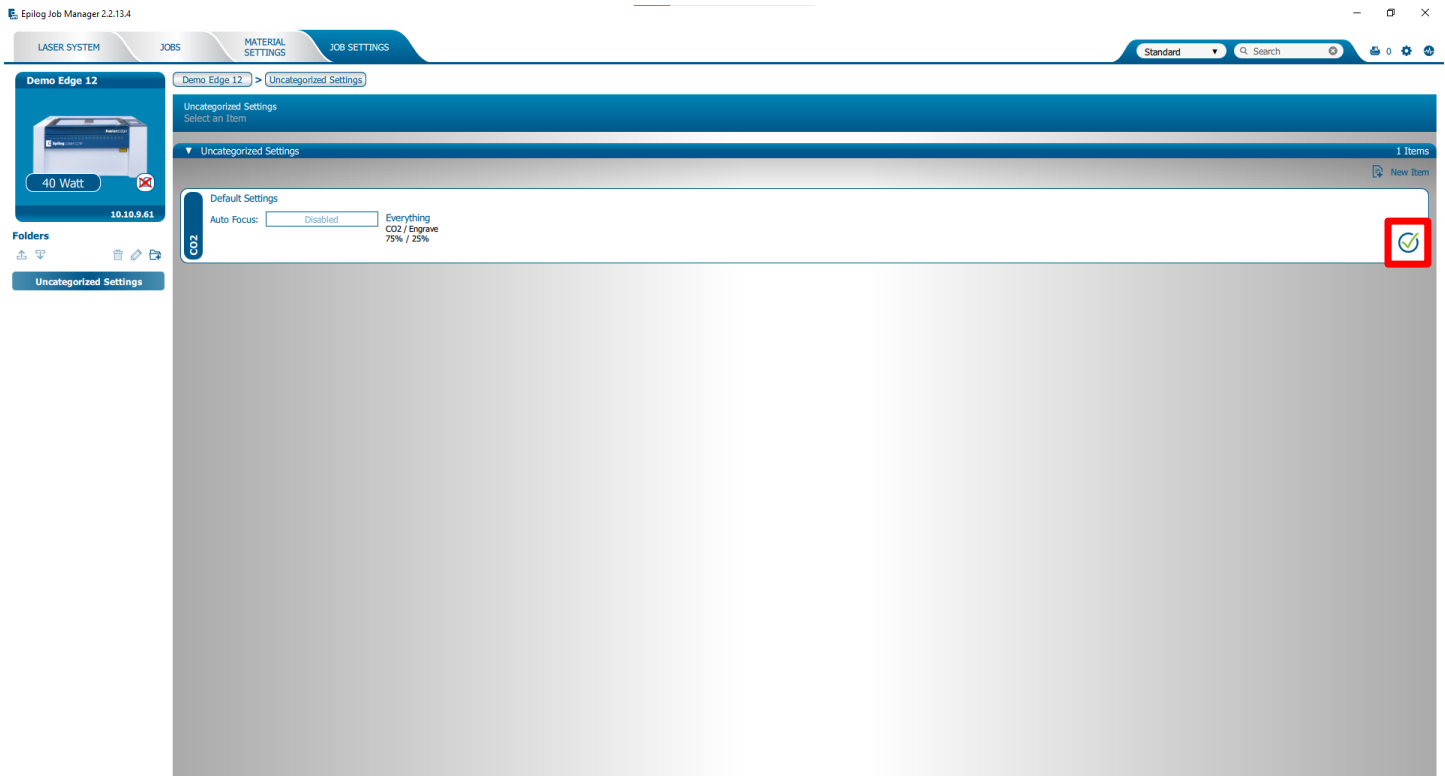


7. Select the job settings that were just exported and select Set As Default:



Software Suite Default Settings

- Once the check mark icon appears on the selected job settings, the settings will be set as the default when any job is sent to the Epilog Software Suite:



If further assistance is required, contact Epilog Laser Technical Support by phone at 303-215-9171, or by email at tech@epiloglaser.com.