



EPILOG LASER

16371 Table Mountain Parkway

Golden, Colorado 80403

Phone 303-215-9171 - FAX 303-277-9669

www.epiloglaser.com

Procedure Title: Replacing the Y-belts

Machine Type: Legend Mini/Helix

Tools Needed: Philips head screw driver
5/16 Nut Driver

Intro:

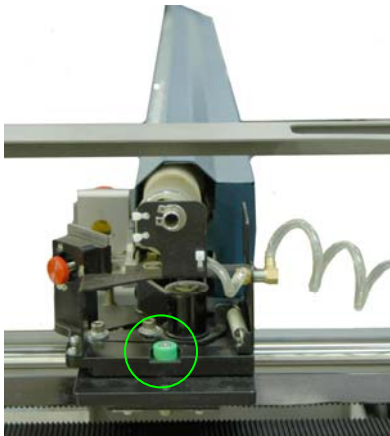
This procedure details steps to replacing the Y-belts. The Y-belt controls the movement of the I-beam from the front and back of the machine. Before starting on this procedure, disconnect the power cord from the machine.

Procedure:

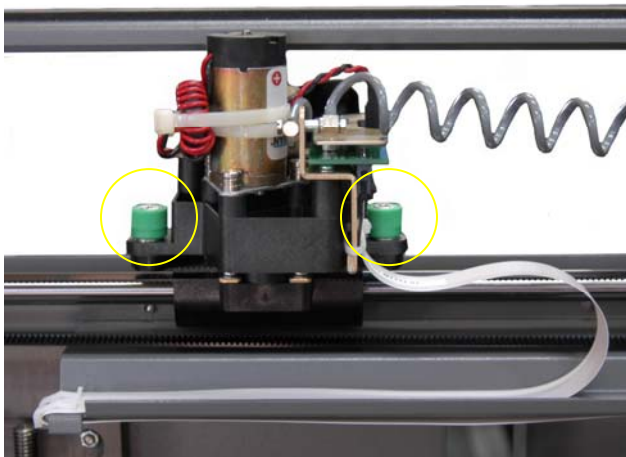
1. Remove both side panels.



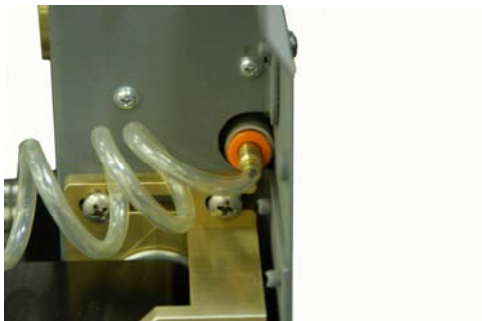
2. Loosen the green captive screw on the right side of the X-beam.



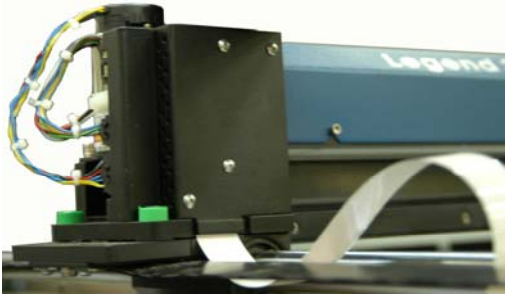
3. Loosen the green captive screws on the left side of the X-beam.



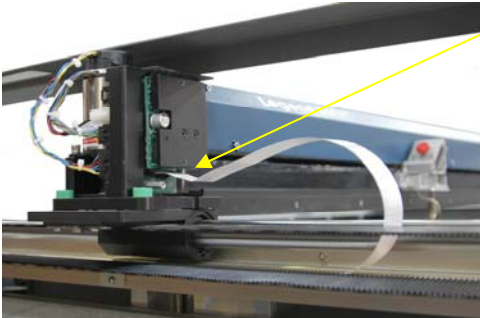
4. Remove the Air intake by pressing in the white ring and pulling out the hose.



5. Remove the amplifier cover from the left side of the X-beam.



6. Disconnect the white ribbon cord



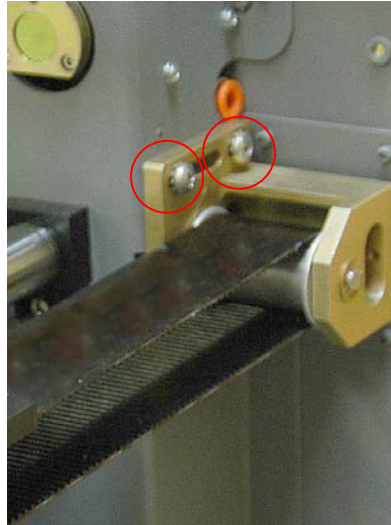
7. Remove the X-beam. Use caution when pulling out the I-beam, avoid hitting the frame rail. The easiest way to pull the X-beam out is to get the left side out first then tilt the X-beam almost vertical, pulling the motor side out slowly.

8. Remove the belt:

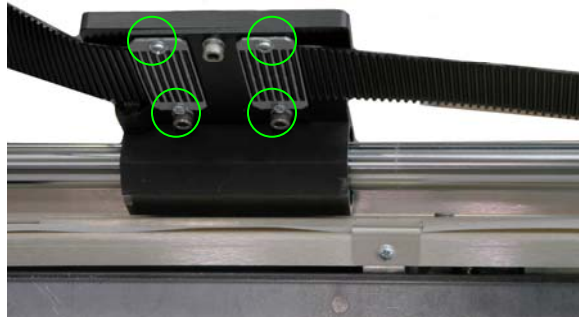
- a. Locate the two tensioning screws on the back of the machine. Loosen these screws.



b. Loosen the four screws on the Y-belt bracket.



c. Lift up the X-beam bracket and remove the plates holding the belt.



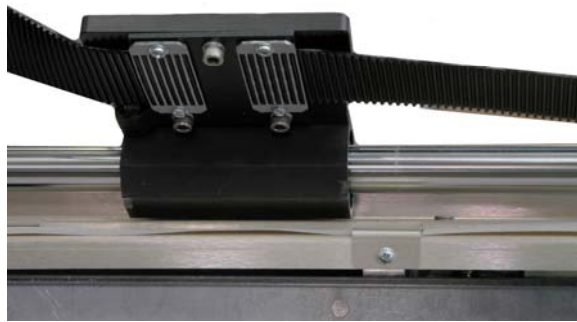
Unscrew the
four screws

9. Replace the belt

- a. Put one end of the belt onto the X-beam bracket.
The grooved side of the belt points downward.
- b. Tighten the two screws on the plate holding the belt.



- c. Loop the belt around the pulleys.
- d. Tighten the two screws on the second plate holding the belt. The grooved side of the belt should face downward when the belt meets at the X-beam bracket.



- 10. Tighten the belt.
 - a. Tighten the two screws on the backside of the machine.



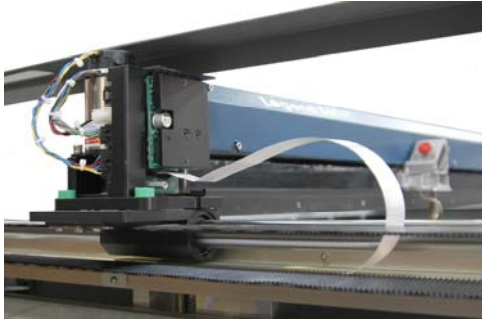
b. When the upper and lower part of the belt becomes parallel tighten the four screws on the pulley.



- 11.Repeat steps 8 through ten for the other side of the machine.
- 12.Move both of the X-beam brackets to the back of the machine.
- 13.Replace the X-beam
- 14.Tighten the green captive screws on each side of the X-beam.
- 15.Reconnect the air intake.



- 16.Reconnect the white ribbon cord.



17. Replace the amplifier cover



18. Replace the side panels.

If you have any questions, please contact Epilog's
Technical Support
Phone 303.215.9171
Fax 303.531.7594
E-Mail tech@epiloglaser.com